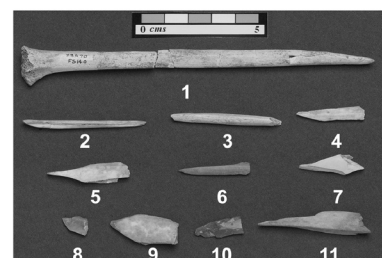
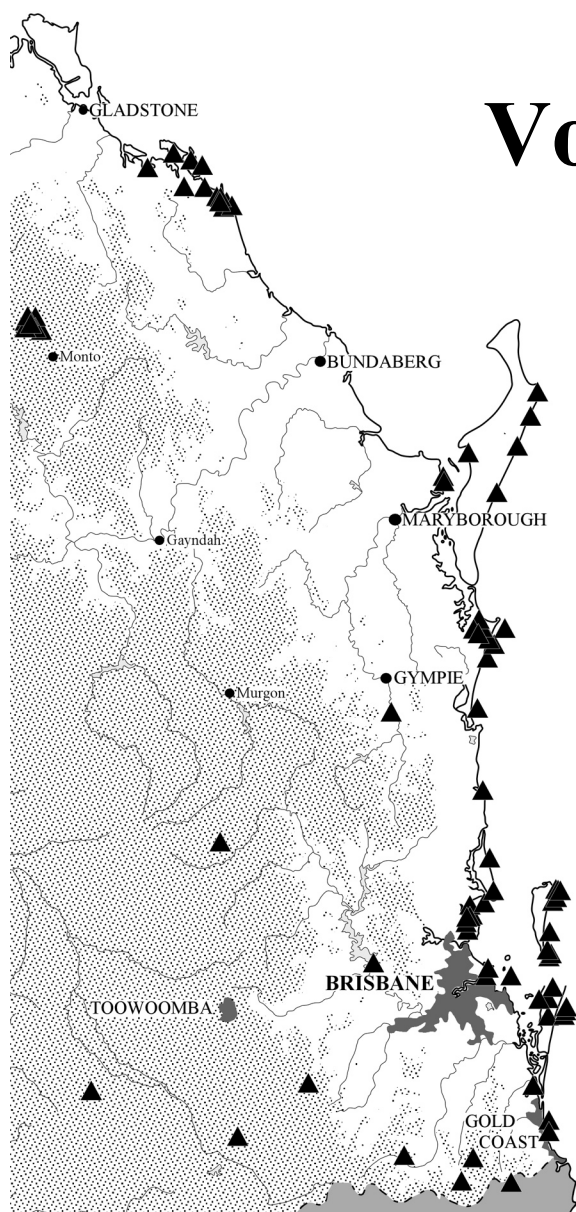




QUEENSLAND ARCHAEOLOGICAL RESEARCH

Volume 13

2002



Recent Archaeological Research in Southeast Queensland

Sean Ulm and Jay Hall (eds)

QUEENSLAND ARCHAEOLOGICAL RESEARCH

Volume 13, 2002

EDITOR

Jay Hall

School of Social Science
The University of Queensland
Brisbane QLD 4072
AUSTRALIA

EDITORIAL ADVISORY BOARD

Peter Hiscock
School of Archaeology & Anthropology
Australian National University

Ian Johnson
School of Archaeology
University of Sydney

Ian Lilley
Aboriginal & Torres Strait Islander Studies Unit
University of Queensland

Harry Lourandos
School of Social Science
University of Queensland

Ian McNiven
School of Fine Arts, Classical Studies & Archaeology
University of Melbourne

Richard Robins
Archaeology Section
Queensland Museum

Anne Ross
School of Social Science
University of Queensland

Jonathan Prangnell
University of Queensland Archaeological Services Unit
University of Queensland

QAR is a refereed occasional journal devoted to publishing substantive archaeological material pertaining to research in Queensland and adjacent areas. Manuscripts should conform to the **QAR Notes to Contributors** which are available from the Editor. Direct all enquiries to Jay Hall, Editor, *Queensland Archaeological Research*, School of Social Science, The University of Queensland, Brisbane, Queensland, 4072, Australia.

Copyright © 2002 School of Social Science, The University of Queensland

ISSN 0814-3021

ISBN 1864996315

Front Cover: Map: distribution of radiocarbon-dated archaeological sites in southeast Queensland. Photographs: (clockwise from top right): bone artefacts from Platypus Rockshelter (p.65); Joe Gala (right) and Fred Blackman (left) excavating Waddy Point 1 Rockshelter (p.5); three gravesites at Lang Park (p.28); Peel Island Lazaret in 1956 (p.32); excavator exposing gravesites at Lang Park (p.28).



Volume 13

2002

Recent Archaeological Research in Southeast Queensland

Sean Ulm and Jay Hall (eds)

CONTENTS

Editorial	<i>Jay Hall</i>	ii
Fraser Island Archaeological Project (FIAP): Background, Aims and Preliminary Results of Excavations at Waddy Point 1 Rockshelter	<i>Ian J. McNiven, Ian Thomas and Ugo Zoppi</i>	1
Background to the University of Queensland Archaeological Services Unit's Lang Park Salvage Excavations: History, Significance Assessment and Methods	<i>Kevin Rains and Jonathan Prangnell</i>	21
The Archaeology of the Peel Island Lazaret: Part 1: Survey	<i>Jonathan Prangnell</i>	31
Towards GIS Mapping and Spatial Modelling of Archaeological Sites in the Southeast Queensland Bioregion	<i>Mike Rowland and Malcolm Connolly</i>	39
Twenty Interesting Points: An Analysis of Bone Artefacts from Platypus Rockshelter	<i>Victoria Francis</i>	63
The Genetic Speciation of Archaeological Fish Bone: A Feasibility Study from Southeast Queensland	<i>Vojtech Hlinka, Sean Ulm, Tom Loy and Jay Hall</i>	71
Reassessing Marine Fishery Intensification in Southeast Queensland	<i>Sean Ulm</i>	79